



INLAND
PARTS

EQUIPMENT PARTS

FOR ALL MAKES & MODELS

TABLE OF CONTENTS

Construction

- 3 Equipment Parts
- 4 Rubber Tracks
- 5 Ground Engaging Tools
- 6 Grinding Teeth
- 7 Undercarriage
- 8 Skid Steer Attachments
- 9 Weldco Buckets

Forestry

- 10 Equipment Parts
- 11 Lighting
- 12 Hot Saw Teeth
- 13 Waratah
- 14 Southstar
- 15 Northface Grapple Tips
- 16 Weldco Log Grapples

Parker Pacific Parts

- 17 Spray Paint
- 18 Fire Tools

Traction Aids & Chains

- 19 Forestry Tracks
- 20-21 Skidder Chains
- 22 Forestry Chains
- 23 Studded Truck Chains
- 24-25 Industrial Chains
- 26 Armour Chain
- 27-30 Ice Lugs

Maintenance

- 31-32 Oil Sampling
- 33 Filtration & Lubrication
- 34 Engines

CONSTRUCTION EQUIPMENT PARTS For All Makes & Models



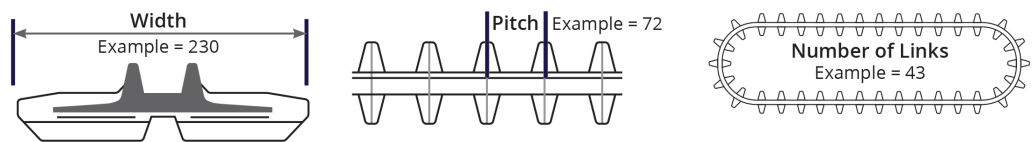


Skid steer and mini excavator rubber tracks are available in three tread patterns. Rubber tracks are built for NOVA using “Lean” manufacturing techniques and premium materials. Complete satisfaction guaranteed. NOVA Rubber Tracks are available for all machine makes and models.

RUBBER TRACK SIZE DEFINITION

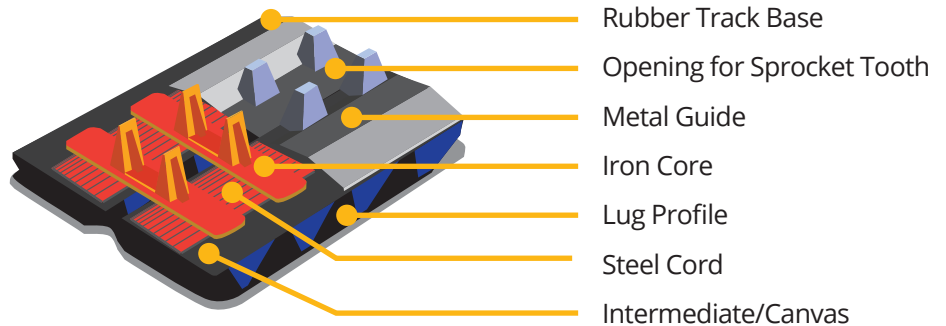
(Width x Pitch Length x Number of Links)

Example: 230 x 72 x 43



Pitch Expressions: $P = \pi (D - 2Z) / n$

P=Pitch, D= Sprocket Diameter, Z=Steel Cord, N=Gear No Sprocket





Make the difference on a job site and choose NOVA Ground Engaging Tools. It's the right choice for high-quality teeth, adapters and cutting edges. More profiles can be found on www.qccanada.com

BUCKET TOOTH PROFILES



Excavator —
Tiger



Excavator —
Twin Tiger



Excavator —
Extra



Excavator —
Rock Chisel



Excavator/
Loader —
Abrasion

ADAPTERS

Adapters fit over the bucket edge. Fits most excavators or loader buckets.



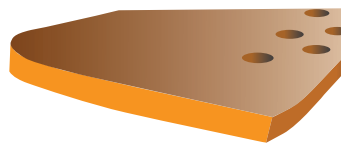
1-1/2 Long Leg Bottom



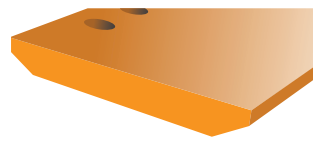
Flush Mount

CUTTING BASE EDGE

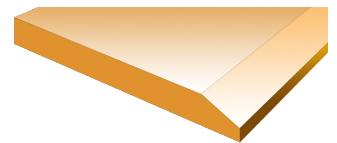
We design and fabricate cutting edges, wear plates, base edges, shrouds and end bits for virtually any piece of equipment.



Hot Cupped End Bit



Double Bevel Flat



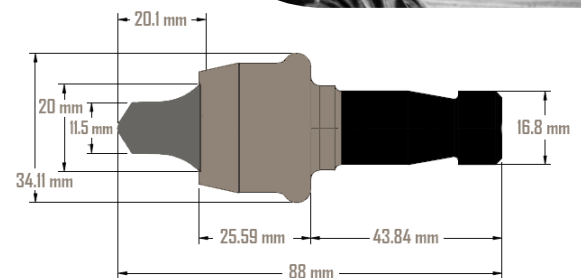
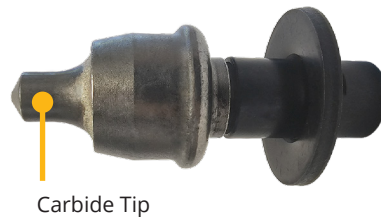
Single Bevel Edge





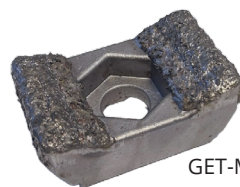
W7R CARBIDE TIPPED ROAD MILLING CONICAL BIT

- Cap-shaped carbide tip bit.
- Designed for removing asphalt layers.
- 20 mm Diameter shank.
- 50 Bits per tote.
- Ideal for reclamation & milling applications.
- Part# GET-W7R

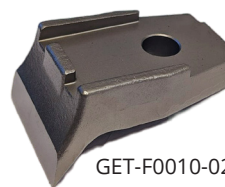


CARBIDE TIPPED MULCHING TEETH

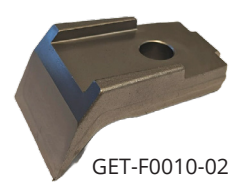
- Carbide-tipped mulching teeth are ideal for abrasive materials like sand and rocks.
- The teeth can be drum-mounted on a skid steer or excavator boom.
- Ideal for roadside clearing, removing invasive species, and site preparation.



GET-MSKGTI-09



GET-F0010-02



GET-F0010-02



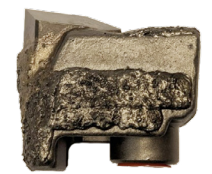
GET-111530012-K



GET-112800063-K



GET-112800064-K



GET-112221000-K

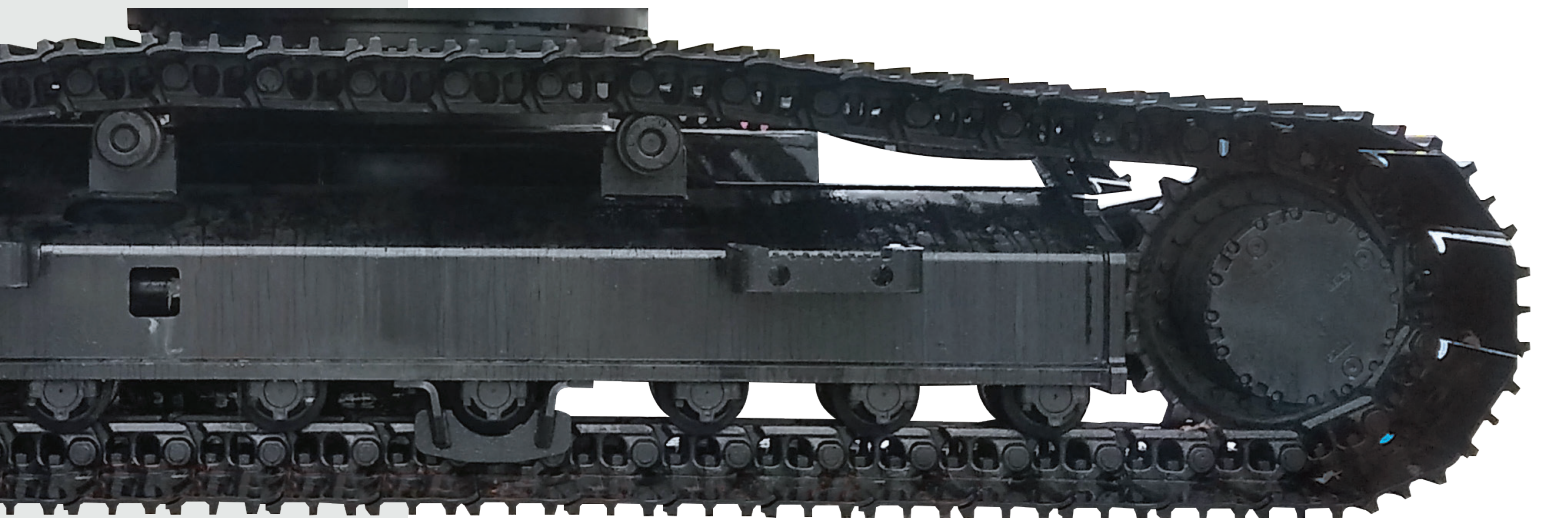


PROVEN TRACK RECORD

NOVA Undercarriage: OEM quality with aftermarket pricing. You may know the name; NOVA has 12 years of experience in the heavy-equipment aftermarket and is a credible competitive player in the supply of Ground Engaging Tools. Following a similar path as our forestry and mining manufacturing products, all our undercarriage is manufactured and assembled using state-of-the-art technology. NOVA Undercarriage is built in Korea with incredible attention to detail resulting in better performance, more significant savings, and lower maintenance costs.

Get on the Right Track!

For your next undercarriage replacement, check your local dealer for NOVA Undercarriage.



FIND AN ATTACHMENT TODAY TO SUIT YOUR JOB.

Skid steer attachments that are built to get the job done.



General Purpose
Skid Steer Bucket



HD Skid Steer
Tooth Bucket



Skid Steer
Snow Bucket



Skid Steer
Snow Pusher



Skid Steer
Pallet Forks



WELDCO-BEALES IS THE TRUSTED HEAVY EQUIPMENT ATTACHMENT MANUFACTURER SINCE 1945.

WBM offers a wide variety of buckets, designed to provide maximum productivity and durability. From light materials, snow and woodchips, to abrasive coal, quarry and rock, we build for every application.



FORESTRY EQUIPMENT PARTS For All Makes & Models





Lighting that's been designed for the market's needs for performance, value, safety, and dependability.

Light Types Include::

- Light Bars
- High Intensity Lights
- Fog Lights
- Safety Lights
- Economy Lights
- Strobe Lights
- Beacons
- Flood Lights
- Compact Lights
- Specialty & Accent Lights and More!



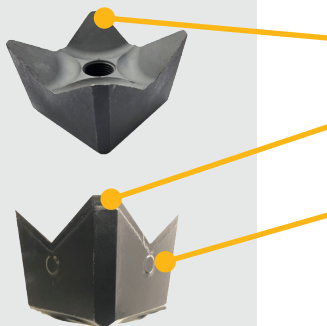


FELLER BUNCHER STEEL & CARBIDE SAW TEETH

Worn saw teeth are the number one productivity-killing factor observed on drive-to-tree feller bunchers. Nova saw teeth fabricated with high-grade hardened, heat-treated alloy steel and feature Beaver profile cutting teeth.



Part #	Type (Beaver Profile)	Tooth Kerf	Shank Length & Dia	Bolt Part #	Bolt Dia.	Features
GET-Q10233T	Shankless	2-5/16" Kerf	No Shank	GET-122844A450	1"	- 18 PCS/Tote
GET-Q10233TRT	Shankless	2-5/16" Kerf	No Shank		1"	- Rock Tooth - 18 PCS/Tote-6
GET-Q10233TC	Shankless	2-5/16" Kerf	No Shank	GET-122844A450	1"	- With Carbide - 18 PCS/Tote-6
GET-Q10233TC-4	Shankless	2-5/16" Kerf	No Shank		1"	- With Carbide Severe Service - 18 PCS/Tote-6
GET-QK10031T	Shankless	2-3/8" Kerf	No Shank		5/8"	- Attach with QK10023T Shank - 18 PCS/Tote-6
GET-QK10031TRT	Shankless	2-3/8" Kerf	No Shank		5/8"	- 18 PCS/Tote-6
GET-QK10024T	Shank	2-3/8" Kerf	2" x 1.234"		5/8"	- 18 PCS/Tote-6
GET-QK10024TRT	Shank	2-3/8" Kerf	2" x 1.234"		5/8"	- Rock Tooth - 18 PCS/Tote-6
GET-QK10024TC	Shank	2-3/8" Kerf	2" x 1.234"		5/8"	- With Carbide - 18 PCS/Tote-6
GET-QK10024TC-4	Shank	2-3/8" Kerf	2" x 1.234"		5/8"	- With Carbide Severe Service - 18 PCS/Tote-6
GET-Q10797TC	Shank	1-3/4" Kerf	1.75" x 1.00"		1/2"	- With Carbide - 9 PCS/Tote-6
GET-Q10797TC-4	Shank	1-3/4" Kerf	1.75" x 1.00"		1/2"	- With Carbide Severe Service - 18 PCS/Tote-6
GET-Q10150T	Shank	2-1/4" Kerf	0.938" x 1-1/4"		1/2"	- 18 PCS/Tote-6



*Beaver Profile

A cutting tooth with straight edges that chew through tree trunks.

Carbide Severe Service

A 3mm strip of Tungsten Carbide merged to the edges. Extends the life of tooth and reduces maintenance.

Carbide Plug Technology

A plug of carbide fused to edge of the tooth profile. Designed to eliminate blow by when harvesting wood in regions where the terrain consists of fine granular earth such as sand and dense dust.



Waratah has always focused on customers, quality, and high-performing machines. Optimized productivity is not only the result of high-quality machines, service, and replacement parts; high-quality consumables and equipment accessories are equally as important to the success of our customers.

Some Available Options:

- Saw Bars and Chains
- Feed Wheels
- Feed Motors
- Cylinders
- Measuring Wheels
- Saw Motors
- Delimbing Knives
- High Wear Pin and Insert Kits
- Cradle
- TimberRite

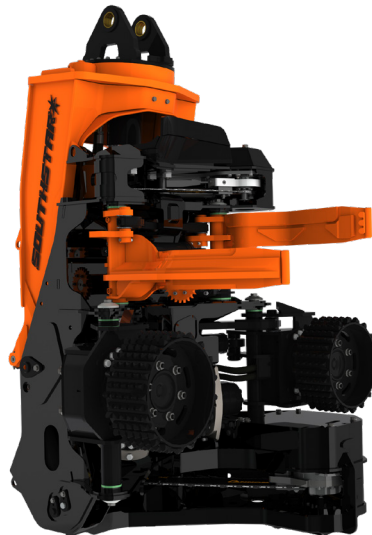




Southstar is committed to developing, designing, and manufacturing the best in forestry attachments. They provide high quality, durable attachments that automate your harvesting and processing, maximizing productivity no matter the environment. The wide range of attachments suit any size stem, are versatile in any terrain, and are exceptionally powerful—whether they're felling, delimbing, sawing, or stacking. Built for durable, optimal performance, Southstar machinery requires minimal maintenance while providing maximum strength and efficiency.

Some Available Options:

- Harvesting Heads
- Felling Heads
- Grapple Processor Heads



Harvesting – QS500



Grapple – QS605



Felling – FD750



THE NEWEST INNOVATION FOR REPLACEMENT TIPS FOR GRAPPLES

New and improved weld-on grapple tips – designed to work on all grapples and tong options.

Advantages with Northface Grapple Tips:

- Easy to install in all weather
- Improved design, makes welding easier
- Field Tested with remarkable results.
- Demonstrated not to break.
- Rounded tip design reduces log damage.
- Unique heat tempered steel for improved tip life.



RB2016



RB2019



RB2018



RB2019-A



RB2018-A



RB2021-A



RB2021-B



WELDCO-BEALES IS THE TRUSTED HEAVY EQUIPMENT ATTACHMENT MANUFACTURER SINCE 1945.

WBM offers a wide range of grapples. Whether you need a grapple for light-duty applications or something more heavy-duty for your toughest jobs, we have a model that will suit your needs.

Weldco-Beales grapples are made from high-quality materials and are built to last. They feature robust construction and are designed for optimum performance in forestry.





PPP SPRAY PAINT TO MATCH YOUR OE

Colour	Part #
Gloss Black	PPP4K002
Satin Black	PPP4K004
Flat Black	PPP4K005
Grey Primer	PPP4K001
Gloss White	PPP4K006
Red Oxide Primer	PPP4K003
CASE Gray	PPP4K013
CASE Power Tan	PPP4K012
CAT Yellow	PPP4K007
Cummins Red	PPP4K008
Link-Belt Grey	PPP4K011
Link-Belt Red	PPP4K010
Tigercat Yellow	PPP4K009
Waratah Red	PPP4K014





GET PREPARED WITH OUR FIRE PRODUCTS



Backpack Pump

Part#: PPP4X001
20L Capacity



Pulaski Fire Axe

Part#: PPP4X002
Fiberglass Handle



Fire Shovel

Part#: PPP4X004
45" Lacquered Wood Handle
10"x7.5" Round Blade



EURO SOFT TRACKS

- Track bars feature bent ends called Soft Ends
- Less ground penetration and disturbance from traditional track systems
- Superior traction on challenging terrain
- Alternating Euro grouser per bar offers less penetration, but excellent slope traction



SINGLE WHEEL TRACKS

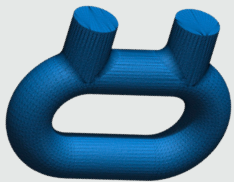
- Reduce costs and downtime
- 32mm forged connecting links
- Mining grade alloy steel forged grousers
- Ideal for very steep terrain



MOUNTAIN MT86 OVERLAND OV88

- Enables operators to skid long drags with faster ground speed
- Oversized OV88mm tire bars for maximum durability & service life
- ME86mm tire bars for unmatched climbing ability
- Double grousers comprised of fully-forged, high carbon mining grade steel
- Increased durability and wear life
- 32mm forged connecting links





NORDIC™ STUDED NET-LINK

Our net link chain uses weld on studs providing grip and durability in icy or rocky conditions.



NLS



NLTS

DOUBLE DIAMOND

16mm, 18mm and 20 mm material

TRIPLE DIAMOND

16mm, 18mm and 20 mm material

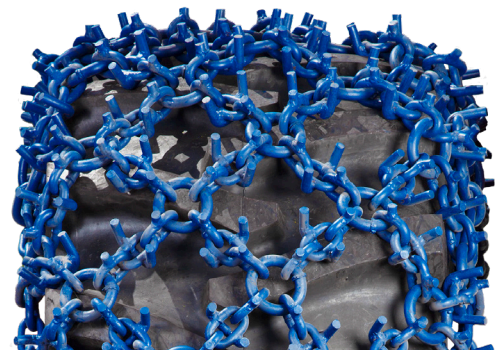


NORDIC™ U-GRIP NET-LINK

The under mount U-Stud provides the ultimate in stability and traction. The NLU is built for the most demanding forestry environments.



NLU



NLTU

DOUBLE DIAMOND

16mm, 18mm, 20mm
& 22mm material

TRIPLE DIAMOND

16mm & 20mm material



NORDIC TIRE CHAINS

The advantage of the 1" forged connecting links: a key wear point on multi-ring style ring chain? Due to the constant contact with the driving surface, this enhanced link replaces the old carburized style of connection with a fully forged link. The result is a well-engineered design that resists the continuous abuse the chain endures.

FORESTRY MULTI-RING CHAIN

Tall oversized forged grousers enable extreme traction in loose, granular earth terrain, such as muskeg. Alloy steel multi-ring chain complete with staggered main and sub-rings. This configuration allows for more tire coverage and traction when compared to a single ring.

- Main rings are fully fixed, sub-rings are floating and able to shed debris easily
- 1.50" diameter main rings
- 1.25" diameter sub-rings
- Forged grousers: 75mm tall x 65mm wide x 25mm thick
- RAMF

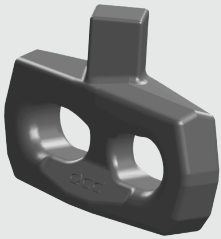
Grouser size:

75mm tall
65mm wide
25mm thick

Forged connecting links:

25mm (1")





NORDIC™ NET-LINK FORGED

Our most aggressive and longest lasting skidder chain, utilizing forged studs and 22mm connecting rings.

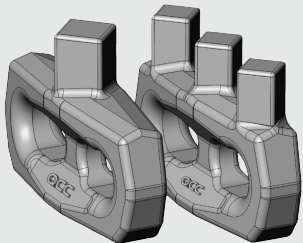
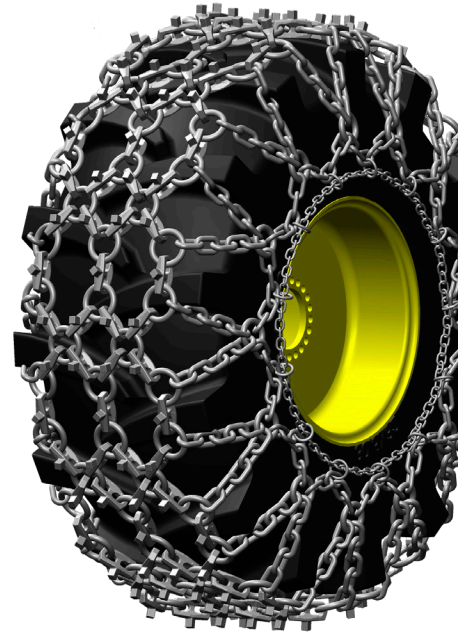
The Nordic™ Net-Link Forged Forestry chain is built for the world's most demanding forestry environments. Nordic™ Forestry chain is in a class of its own, providing unsurpassed wear life.

Single Stud

Its unique patent pending design will not allow snow and mud to accumulate. Traction will never be compromised.

Accessories

Chain Tightener 2506HD
(sold separately)



NORDIC™ ARMOUR FORGED PROTECTION CHAIN

Tires represent the most expensive maintenance costs for forestry skidders. The NORDIC Armour forged forestry protection chain increases tire life by protecting the tires surface from excessive wear, punctures and cuts. The Nordic™ Armour is available in either a single or triple stud depending on operational needs.

Single Stud - Extreme

Used for traction in the most extreme environments. Its unique patent pending design will not allow snow and mud to accumulate. Traction will never be compromised.





8MM SUPER ALLOY STUDDED

- Oversized studs and deep carburization for maximum strength and durability.
- 10mm hardened bell style hooks.
- 8mm hardened side chain.

7MM SUPER ALLOY STUDDED

- 9mm oversized studs and deep carburization for maximum strength and durability.
- 9mm hardened bell style hooks.
- 8mm hardened side chain.

7MM LIGHTWEIGHT SUPER ALLOY STUDDED

- 9mm oversized studs and deep carburization for maximum strength and durability.
- 8mm extra hardened bell style hook.
- 6mm hardened side chain.





NORDIC™ SUPER GRIP STUDDED

- Ideal for aggressive off-road applications.
- The continuous pattern provides excellent traction in all directions for studs to dig into terrain- a smooth and comfortable ride on solid surfaces.



NORDIC™ STUDDED H-PATTERN

Best for aggressive off-road applications.

- Hardened alloy steel throughout the chain for maximum life.
- H-patterns prevent the chain from settling below the lugs.
- 10mm, 11mm, and 13mm studded cross patterns.



NORDIC™ STUDDED ALLOY

- 10mm, 11mm, and 13mm hardened alloy steel construction for maximum life.
- Excellent traction in harsh conditions.
- Designed for plows, graders, forklifts, scrapers, loaders, etc.
- Available in single duty 4 link spacing and double duty 2 link spacing (-2).





WEAR-BAR SQUARE LINK SINGLE DIAMOND

Wear-bar pattern chain provides excellent continual traction with both on and off-road.

- The wear bar pattern will not damage road surface during snow removal or damage rig mats when moving equipment on and off
- Comes with side chain tensioning system



SQUARE LINK ALLOY

Square edge links dig into the driving surface. These chains can be run on both sides.

- For plows, graders, forklifts, and scrapers.
- Available in single duty four-link spacing and double-duty two-link spacing (-2).
- 10mm 11mm & 13mm alloy square link cross chains.

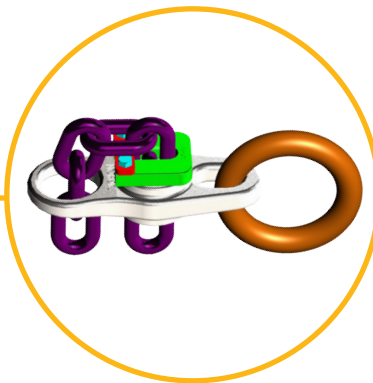
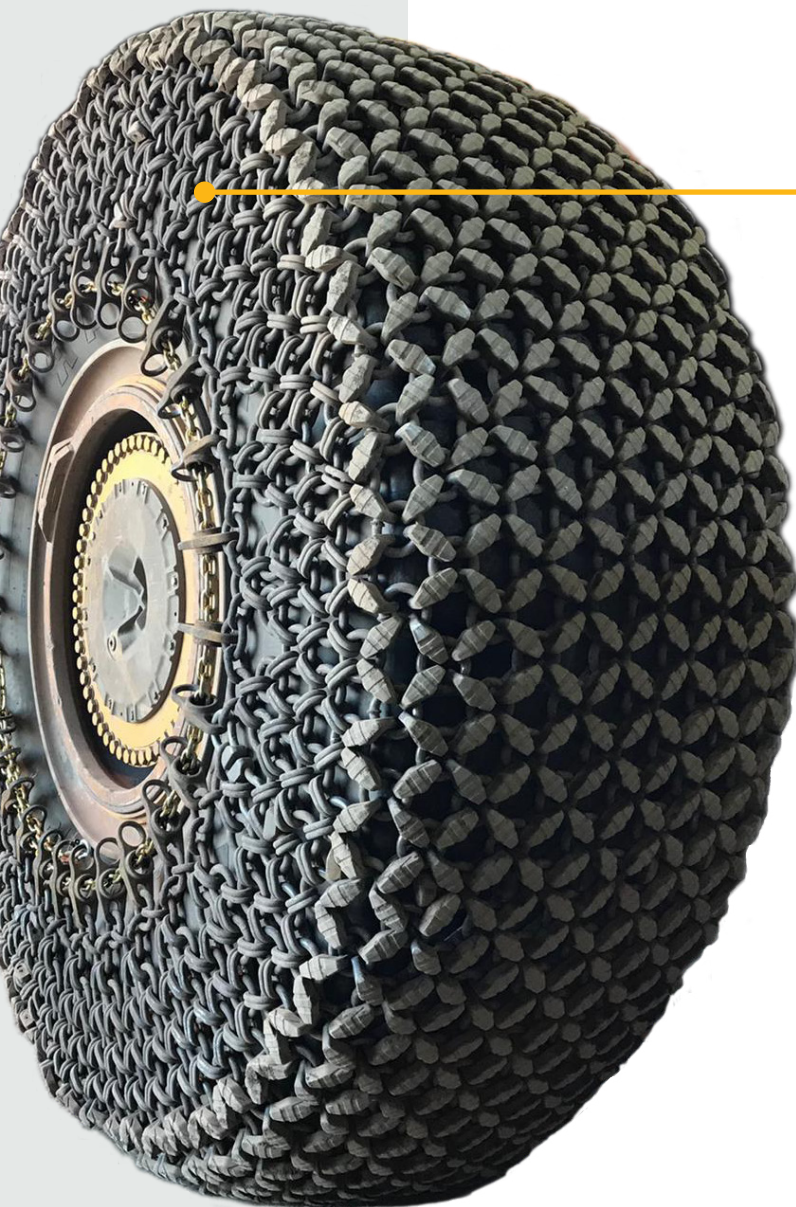




NORDIC™ TIRE PROTECTION CHAIN

Tires represent the most expensive maintenance costs for the mining industry. The Nordic™ Armour Protection chain increases tire life by protecting the surface of the tire from excessive wear, punctures and cuts.

- Fits tire sizes 17.5R25 - 60/80R57
- NORDIC™ Armour High-wear lug





Offering custom packaging & quantity options in High Carbon, Heat Treated and High Chrome Heat Treated Grouser Bars in 15 different profiles, specifically designed to fit any equipment size & budget.

Custom cut lengths available on all profiles.

All high carbon profiles (L / A / K / F / C bar) are stocked in 3" & 4" lengths.

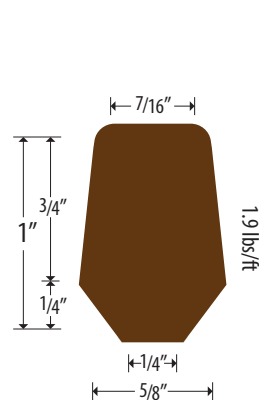
Grouser bars displayed at actual size.

HIGH CARBON — GROUSER BAR

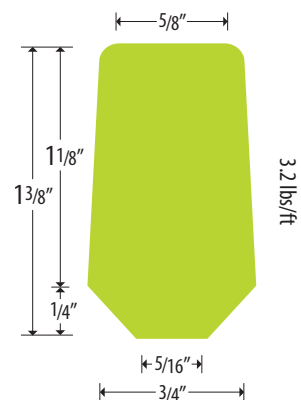
Available in 10' lengths or 3" & 4" standard ice lug lengths.

Custom cut lengths also available on all High Carbon profiles.

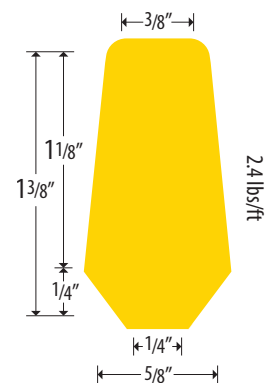
Rockwell Hardness: 25-30



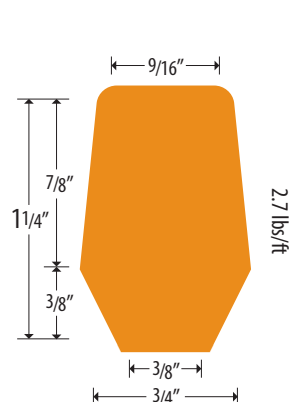
L Bar Brown End



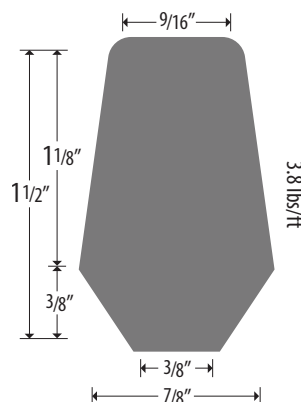
F Bar Bright Green End



A Bar Yellow End



K Bar Orange End



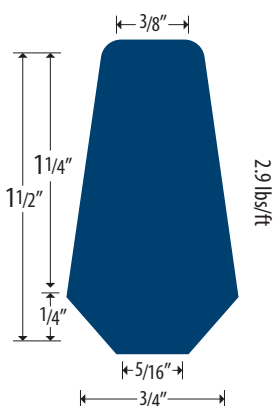
C Bar Grey End



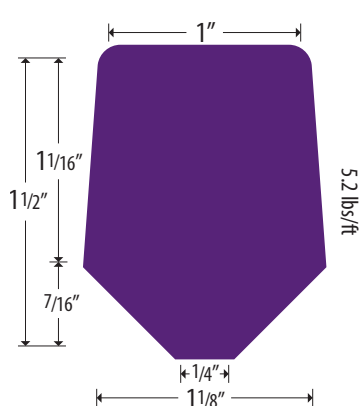
HEAT TREATED — GROUSER BAR

Heat Treated - Boron steel increases ductility, toughness, and wear resistance.
Available in 10' lengths. Some pre-cut profiles available.
Custom cut lengths also available on all Heat Treated profiles.

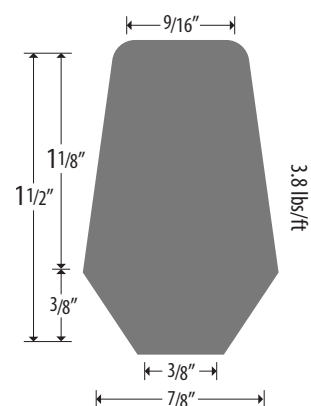
Rockwell Hardness: 45-50



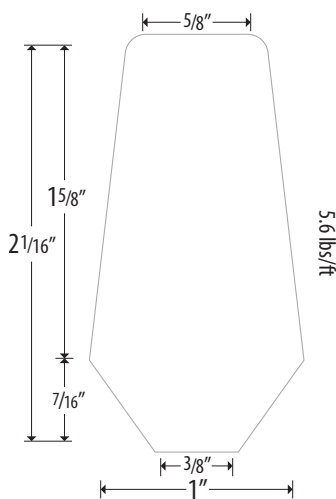
E Bar Dark Blue End



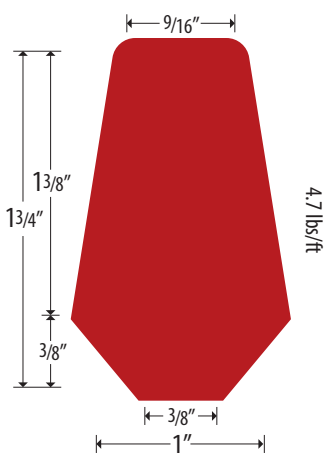
T Bar Purple End



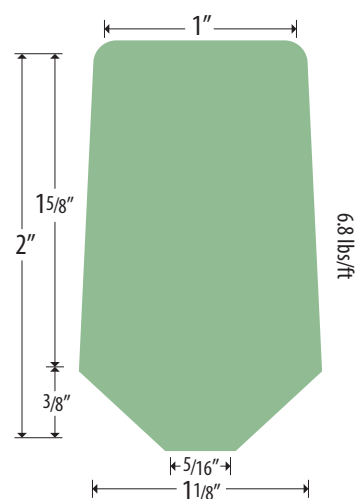
C Bar Grey End



H Bar White End



G Bar Red End



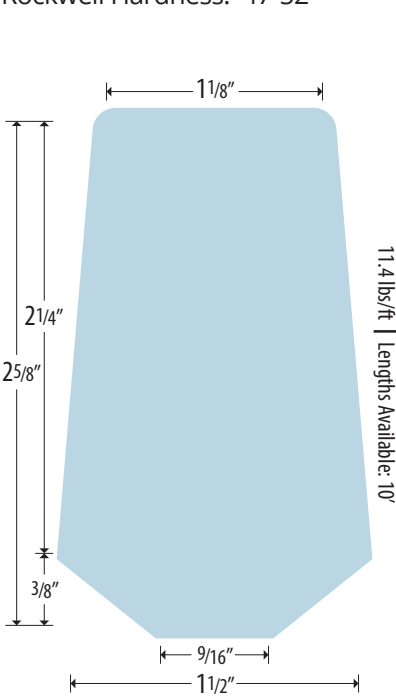
S Bar Pale Green End



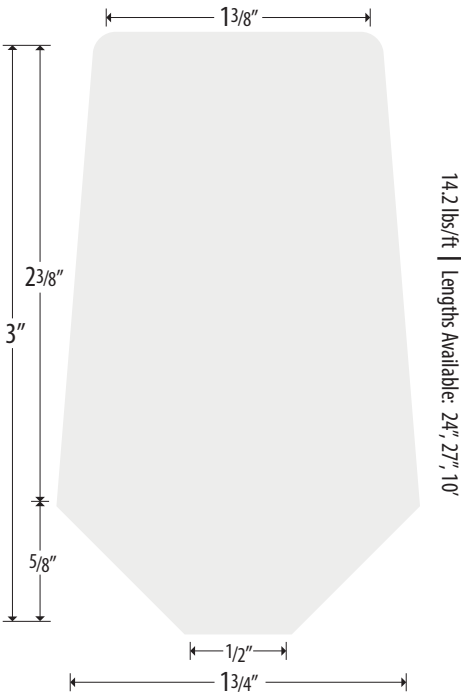
CHROM-X HEAT TREATED — GROUSER BAR

Increased Chromium content promotes a more thorough Heat Treatment with higher toughness and wear resistance. Chrom-X profiles are available in 10' and pre-cut lengths (as listed). Custom cut lengths also available on all Chrom-X profiles.

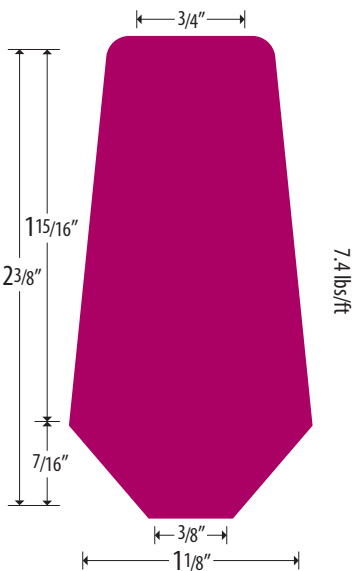
Rockwell Hardness: 47-52



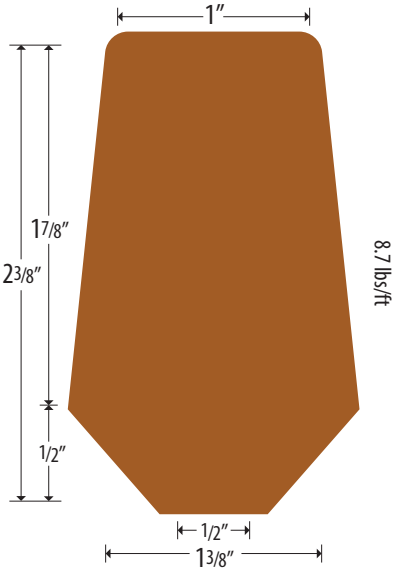
P Bar Pale Blue End



R Bar Plain End



J Bar Pink End



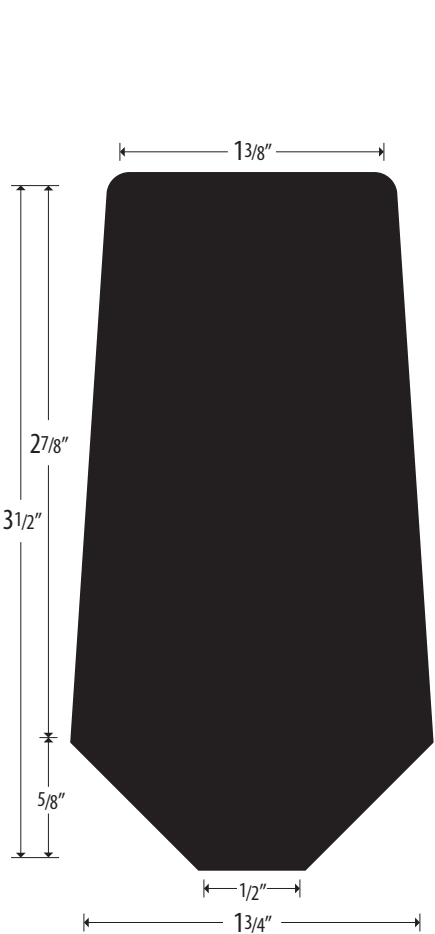
M Bar Copper End



CHROM-X HEAT TREATED — GROUSER BAR

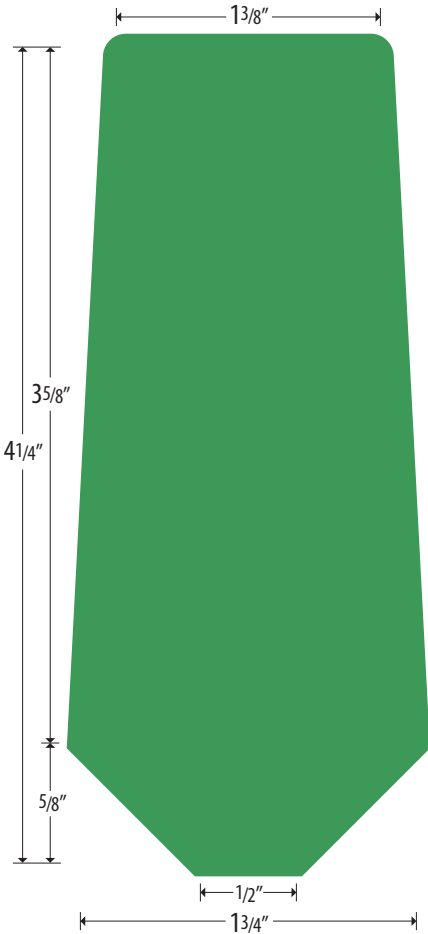
Increased Chromium content promotes a more thorough Heat Treatment with higher toughness and wear resistance. Chrom-X profiles are available in 10' and pre-cut lengths (as listed). Custom cut lengths also available on all Chrom-X profiles.

Rockwell Hardness: 47-52



X Bar Black End

17.6 lbs/ft | Lengths Available: 24', 27', 34'



Z Bar Green End

21.6 lbs/ft | Lengths Available: 34'



DON'T WAIT FOR SURPRISES: Why Oil Sampling is Essential for Heavy Equipment Maintenance

Do you want to:

- Maximize the productivity and longevity of your equipment?
- Reduce unexpected downtime and costly emergency repairs?
- Increase the overall value of your investment?
- Reinforce your existing maintenance program?

While routine maintenance schedules are fundamental to improving the durability, efficiency, and value of your machinery, an additional, often overlooked element plays a crucial role...

Regular oil sampling is essential for maintaining machinery and equipment. It allows you to monitor the condition of your equipment by analyzing the oil for contaminants, such as metal particles or dirt, which can indicate excessive wear or potential component failure. This early detection can prevent costly breakdowns and unplanned downtime, ultimately increasing productivity and reducing maintenance expenses.

Oil sampling also provides valuable data for assessing the effectiveness of lubricants and identifying any potential issues with their performance. This information helps you to make informed decisions about lubricant selection and usage, optimizing equipment performance, and extending its operational life.

We value the partnership that you've entrusted to us, and we want to see you succeed. By using TFA, LOAMS, or Systemgard, you automatically partner with the manufacturer to get the very best from your maintenance program.

Let us do our part by taking care of the logistics and tracking. For more details, speak to your local Inland representative—and don't forget to ask about our warranty-approved replacement fluids for your machines.



Find the program for your machine and register your sample online.

<https://qrco.de/beoxB5>





REQUIRED OIL SAMPLING INTERVALS FOR TIGERCAT & LINK-BELT MACHINES

Link-Belt/LOAMS —

Powertrain Component	First Sample	Follow-Up Samples
Engines	250 hours	Every 500 hours
Hydraulics	250 hours	Every 500 hours
Gearboxes/Transmissions	250 hours	Every 500 hours

Tigercat/TFA —

Powertrain Component	First Sample	Follow-Up Samples
Hydraulic System	125 hours	Every 1000 hours or 6 months
Axles - Front & Rear	125 hours	Every oil change (1000 hours or 6months)
Bogies, Differentials, & Planetaries	125 hours	Every oil change (1000 hours or 6months)
Pump Drive Gearbox	125 hours	Every oil change (500 hours or 3 months)
Swing Drive Gearbox(es)	125 hours	Every oil change (500 hours or 3 months)
Track Drive Gearboxes	125 hours	Every oil change (1000 hours or 6months)
Transfer Case Gearbox	125 hours	Every oil change (500 hours or 3 months)
Engines Diesel Fuel	As required	As required

Case/Systemgard —

Powertrain Component	Component Interval	Suggested Method & Location
Engines	250 hours or at recommended change interval	By vacuum pump or Simplo jar through dipstick retaining tube or sampling valve installed in filter return
Hydraulics/Transmissions	250-500 hours	By vacuum pump or Simplo jar through oil fill port of system reservoir at mid-level
Differentials or Gearboxes	750 hours	By vacuum pump or Simplo jar through oil level plug or dipstick retaining tube





FOR ALL ENGINE MAKES, THERE'S ONLY ONE CHOICE

No matter what engine you have in your equipment, help protect it with genuine Fleetguard products.

Fleetguard provides equivalent performance to the OEM product. Plus, all Fleetguard products come with a one-of-a-kind warranty to give you the ultimate peace of mind.



DELO FOR PROTECTION

Keeps equipment on the job longer, giving you a competitive advantage. Synthetic and blended oils for critical engine protection and reduced downtime.

GET THE RIGHT GREASE

Whole grease portfolio to meet any need.



CATALYST LUBRICANTS

High quality lubricant line that includes chain, hydraulic, and engine oils. Blended with virgin base oils and designed to meet all required industry standards.



LUBRICANTS ENGINEERED FOR CASE CONSTRUCTION EQUIPMENT

- Engine Oil
- Coolants
- Transmission Oil
- Greases





STAY ON TRACK WITH PARTS & SERVICE SUPPORT

New Cummins engines are built with remanufacturing in mind, enabling them to have a long and fuel-efficient life. Up to 85 percent of an engine can be remanufactured, and Cummins engines are built to be remanufactured multiple times.

- Remanufactured to latest Cummins performance specifications for improved performance & fuel economy
- 100% genuine Cummins new or ReCon parts
- Low or no cost uprates for more horsepower and newer Cummins engine technology

